

H2020 Project on Animal Welfare:



Innovations improving welfare in low input and organic pig and poultry farms

INRAE

Anne COLLIN

INRAE, Université de Tours, BOA, 37380 Nouzilly, France

5th Plenary meeting of the European Pigmeat Reflection Group, 21 November 2022



Why is it important to consider welfare in low-input outdoor and organic farming systems?

- High quality of the rearing practices and of the products
- Diversity of practices throughout Europe
- Still a need to improve animal welfare and limit mortality, in relation to the outdoor access challenging the animals, ethical issues, the wish of practitioners and societal expectations

Identify, test and evaluate animal welfare-improving practices by taking into account environmental, economic and social impacts including human well-being

PPILOW partners and collaborators



PPILOW

Poultry and Pig Low-input and Organic production systems' Welfare

2019-2024



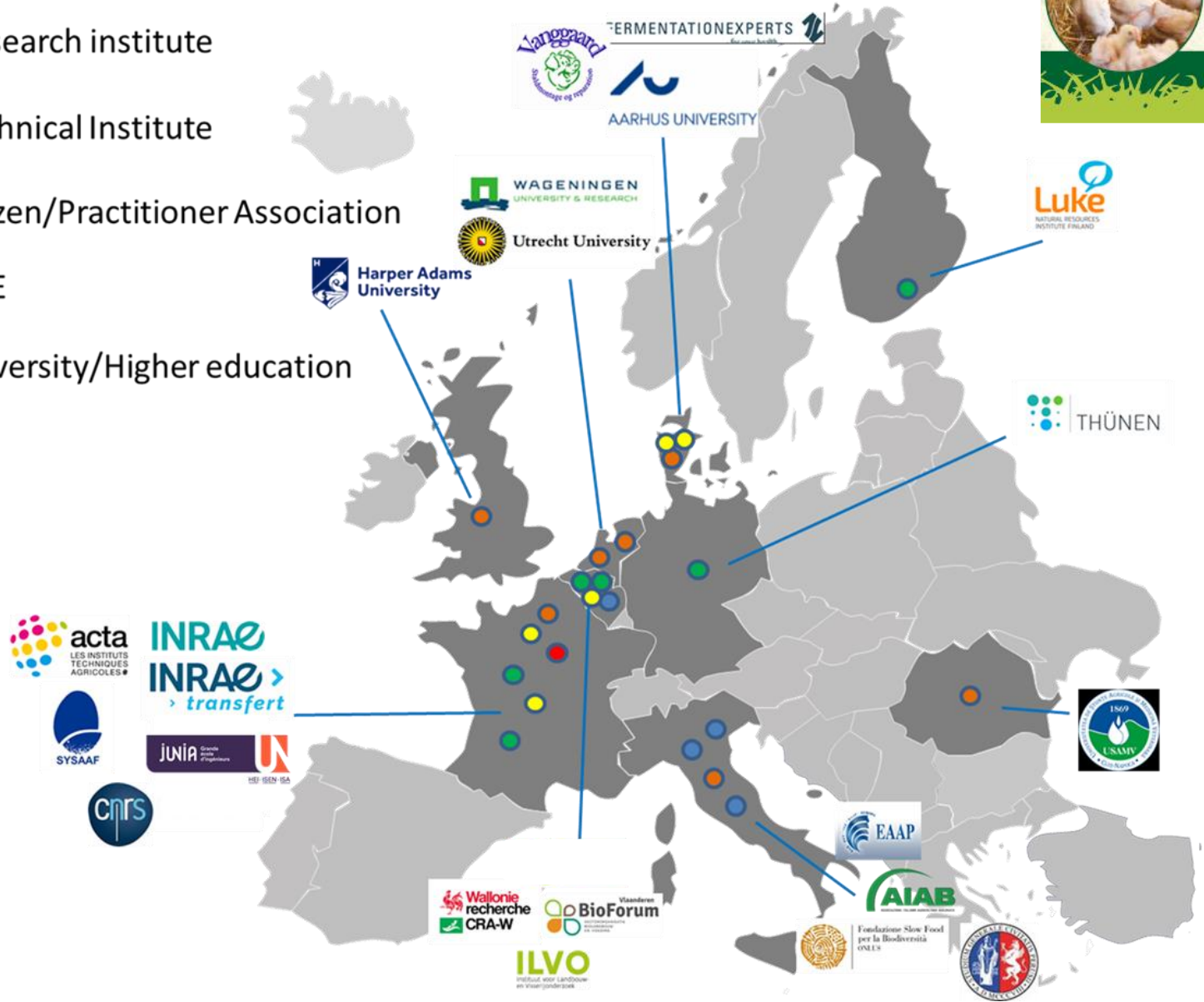
Coordination: **INRAE**

22 PPILOW Partners in 9 countries

9 National Practitioner Groups (NPG): 4 dedicated to pigs

www.ppilow.eu

- Research institute
- Technical Institute
- Citizen/Practitioner Association
- SME
- University/Higher education



PPILOW Participative approach led by AIAB (Italy)



Practitioners involved:

- Farmers
- Breeding companies
- Nutrition firms
- Equipment firms
- Slaughter houses & Processors
- Retailers
- Production organisations
- Veterinarians...



©INRAE

Different organisation scales depending on the country and production types (for pigs: BE, FR, IT, RO)



©Thuenen

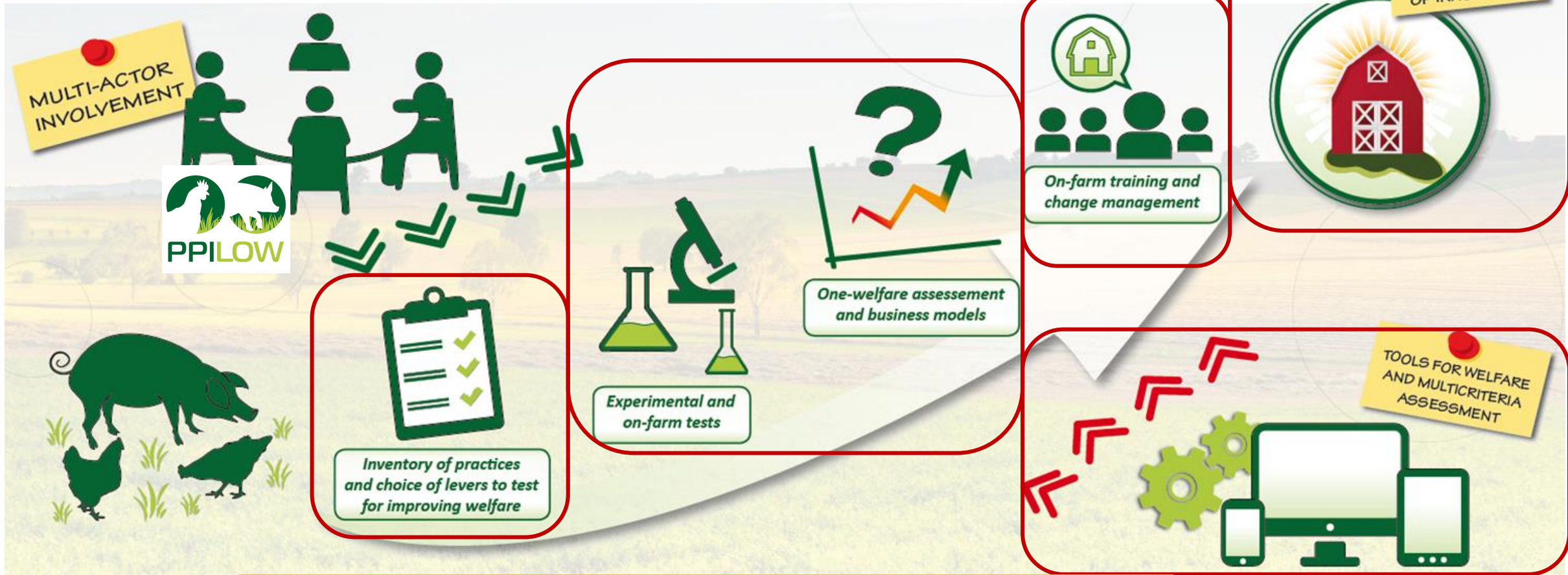
Other members of the society involved:

- Organic production syndicates, associations or federations
- Consumer associations
- Citizen associations, especially dedicated to animal welfare
- Policy makers



©USAMV Cluj

Innovative breeding and rearing strategies

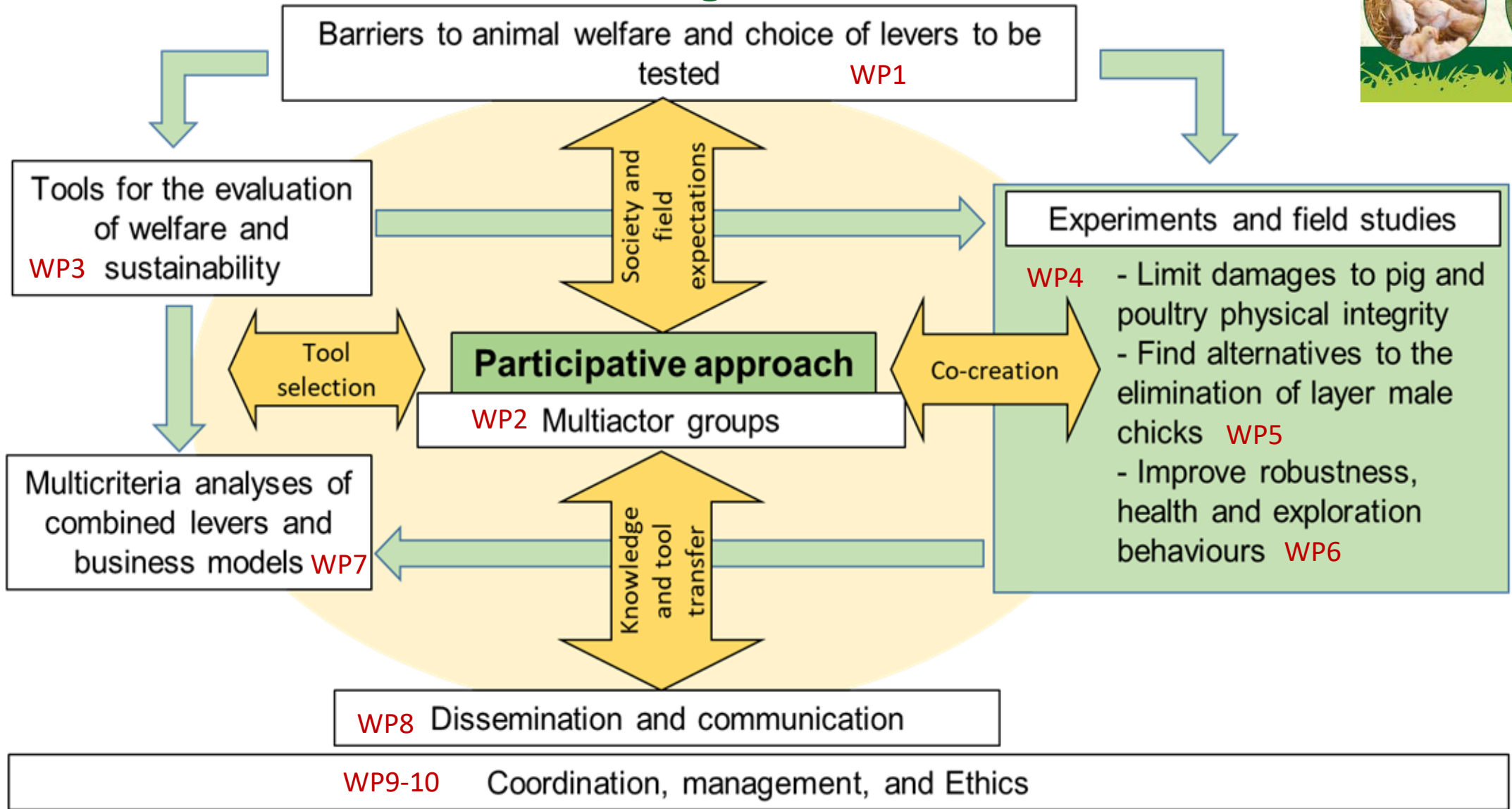


Favouring positive behaviours, improving health and robustness

Avoiding piglet castration



PPILOW Organisation



PPILOW first outputs

Barriers to animal welfare and choice of levers to be tested **WP1**



Practice Abstract n. 5

Practice Abstract n. 6



Stakeholders' views regarding the key challenges in organic and low-input pig farming

PPILOW focus group discussions indicated several challenges which require specific attention in organic and low-input pig production.



Perceived usefulness and feasibility of measures to enhance animal welfare in organic and outdoor-reared pigs and poultry



• Review of European Pig and Poultry Productions Systems and Marketing Labels Elaborating Animal Welfare •

Jarkko K. Niemi¹, Katriina Heinola¹, Minna Väire¹, Claire Bonnefous², Lisa Baldinger⁷, Vasile Cozma⁵, Virginie Decruyenaere⁸, Jonathan Hercule³, Sophie Herremans³, Christine Leterrier², Antoine Roinsard⁴, Patricia Parrott⁶, Petra Thobe⁷ and Anne Collin²

Poultry and Pig Low-input and Organic production systems' Welfare



Barriers

Tools for the evaluation of welfare and sustainability
WP3

Two applications for on farm welfare self-assessment PIGLOW and EBENE®,

Tables for collecting experimental and farm data for multicriteria One Welfare evaluations

Organic Farm Knowledge

SEARCH TOOLBOX SERVICES THEMES &

Home >> Tool

BACK

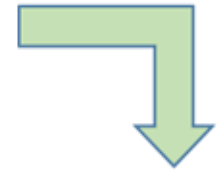
PIGLOW application for animal welfare self-assessment by farmers

Monitor and improve the welfare of your pigs.

Link to the tool

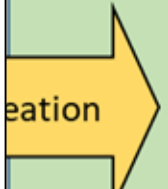
PIGLOW

to be



Experiments and field studies

WP4 - Limit damages to pig and poultry physical integrity
- Find alternatives to the elimination of layer male chicks



SUSTAINABILITY PILLAR	ONE WELFARE DIMENSIONS
Animal Welfare (4)	Good Feeding
	Good Environment (Housing)
	Good Health
	Appropriate Behaviour
Environment (3)	Enhance biodiversity
	Reduce pollution (soil, air, water)
	Minimize external resources used
Economy (4)	Performance - quantity
	Performance - quality
	Returns
	Costs
Society (4)	Working conditions
	Job perception and motivation
	Connection with local community
	Social Acceptability

Use of the PIGLOW and EBENE welfare self-assessment applications

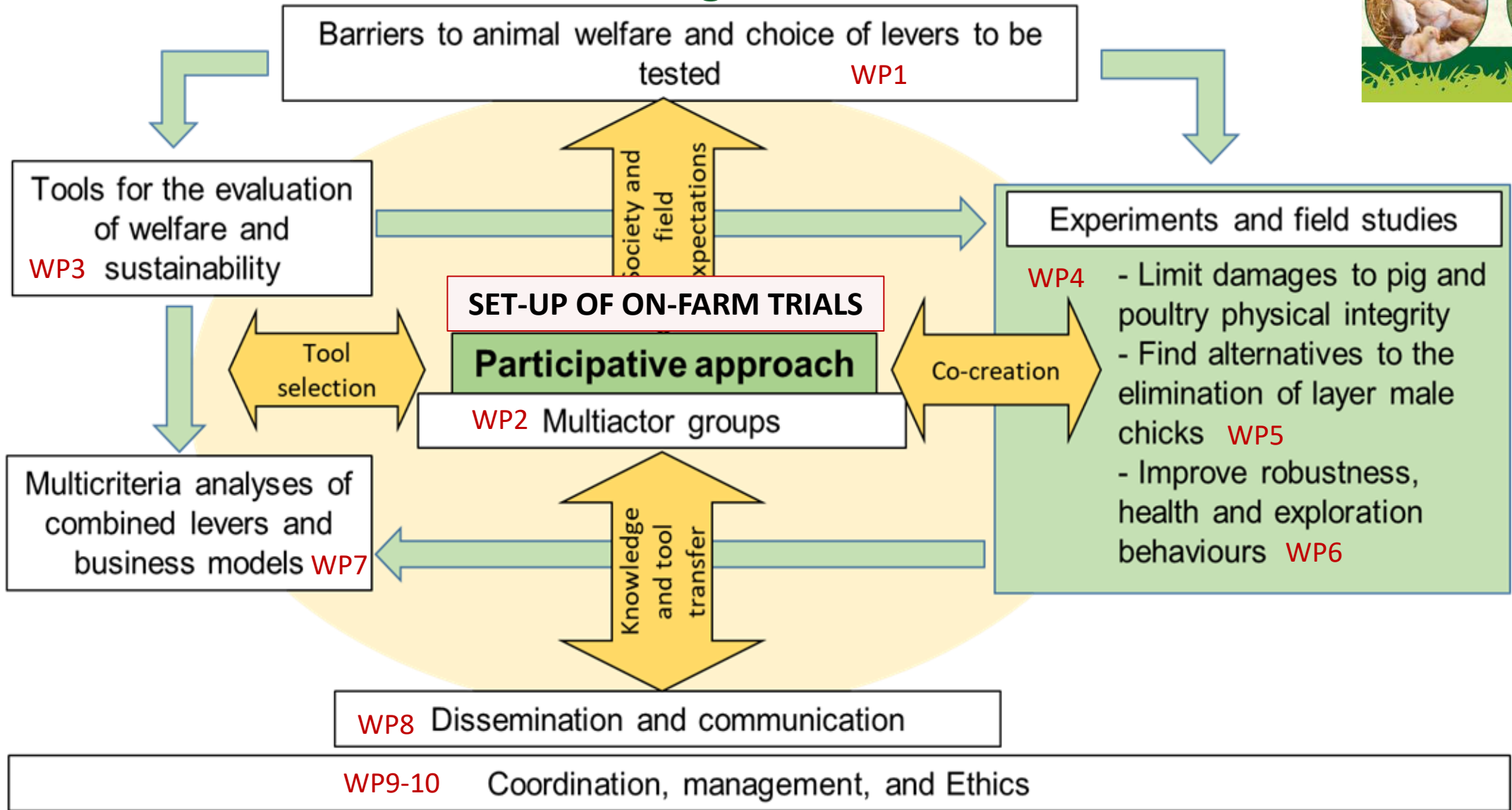


WP5 Improve robustness, and exploration behaviours
WP6

WP



PPILOW Organisation

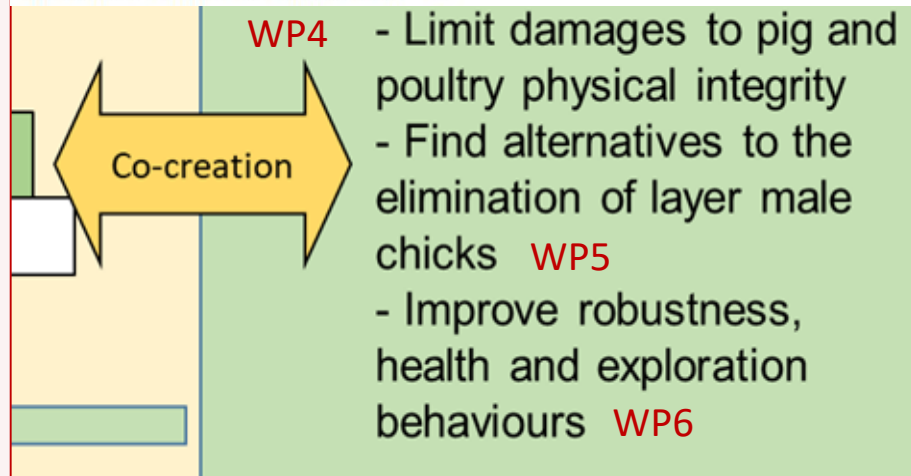




Article

Prevalence of Swine Gastrointestinal Parasites in Two Free-Range Farms from Nord-West Region of Romania

Mihai-Horia Băieș¹, Zsolt Boros¹, Călin Mircea Gherman^{1,*}, Marina Spînu², Attila Mathe³, Stefan Pataky³, Menelaos Lefkaditis⁴ and Vasile Cozma^{1,5}



ion
, and Ethics



Fig. 1 and 2 – Farrowing huts from the Danish PPILOW partner firm Vanggård Staldmontage (© Vanggård)

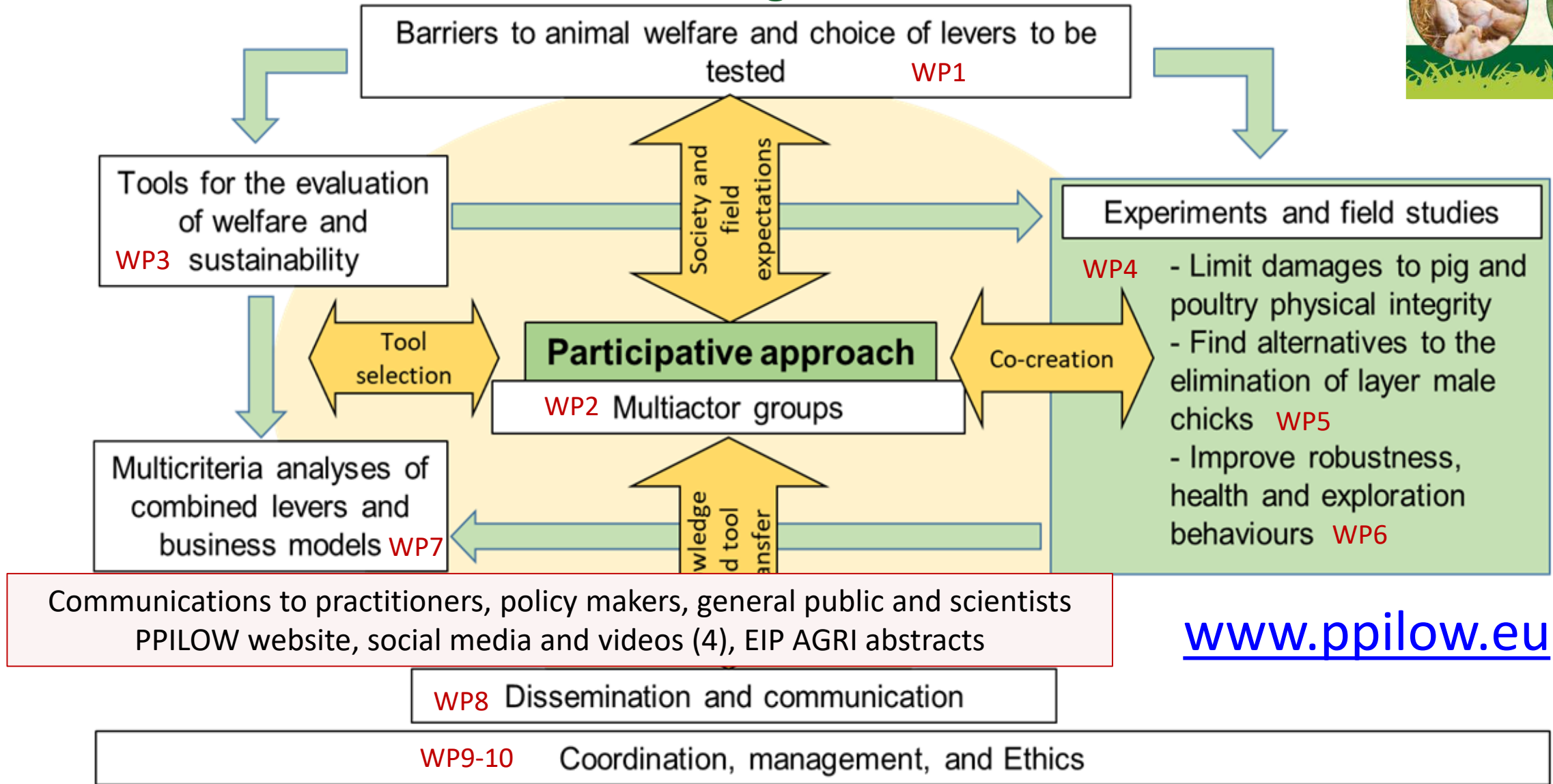
First experimental results on the use of:

- Genetics and enrichment strategies for rearing entire male pigs (INRAE, IFIP)
- Alternative feeds (plant extracts, fermented feeds) in pigs for limiting pathologies and parasitism (USAMV)
- Genetic lines for sow welfare and piglet survival (INRAE)
- New farrowing hut design for sow welfare and piglet survival on the free range (AU, Vanggaard)





PPILOW Organisation



www.ppilow.eu

PPILOW PARTNERS



Fondazione Slow Food
per la Biodiversità
ONLUS



Thanks for your attention!

www.ppilow.eu

The PPILOW consortium: Collin A, Bonnefous C, Rocchi L, Meloni G, Re M, van Vooren L, Niemi J, Väre M, Lähtinen K, Tuyttens F, Graat E, Van den Hole C, Rodenburg TB, Kliphuis S, Giersberg MF, Tavares O, Desaint B, Lombard S, Steinfeldt S, Pedersen LJ, Engberg R, Almadani MI, Carelli R, Sciarretta M, Guilloteau LA, Réhault-Godbert S, Caillaud L, Bernardet N, Gautron J, Le Bihan-Duval E, Mignon-Grasteau S, Berri C, Guettier E, Baéza E, Chartrin P, Bordeau T, Raynaud E, Couroussé N, Cailleau-Audouin E, Crochet S, Collet J, Tourneur L, Guichaoua A, Van den Brand H, Molenaar R, Castellini C, Mattioli S, Reverchon M, Sourdioux M, Akakpo R, Rangel Pedersen N, Schepens R, Almind M, Grenier K, Dubuc D, Le Lann M-V, Ponzio R, Mainardi M, Accotto C, Coletta M, Guesdon V, Leruste H, Billiard B, Ferreira VHB, Hill N, Baldinger L, Pluschke H, Delanoue E, Warin L, Pertusa M, Stomp M, Travel A, Hercule J, Cadudal F, Quentin M, Germain K, Ravon L, Calandreau L, Leterrier C, Labas V, Teixeira-Gomes A.P, Uzbekova S, Maugrion E, Prunier A, Merlot E, Tallet C, Van Milgen J, Clouard C, Lebret B, Montagne L, Faure J, Zuliani A, Venezia P, Canario L, Ferchaud S, Cozma V, Spinu M, Băieș M.H, Courboulay V, Roguet C, Gaudré D, Chevillon P, Alibert L, Decruyenaere V, Wavreille J, Vanggaard P, Vanggaard JB, Micheloni C, Thobe P



Introducing the aWISH project: Animal Welfare Indicators at the SlaughterHouse

Jarissa Maselyne

ILVO – Flanders research institute for agriculture, fisheries and food, Belgium

For: EU Pigmear reflection group, 21/11/2022



Funded by the
European Union

www.awish-project.eu
awish@ilvo.vlaanderen.be

ILVO

Flanders Research Institute for
Agriculture, Fisheries and Food

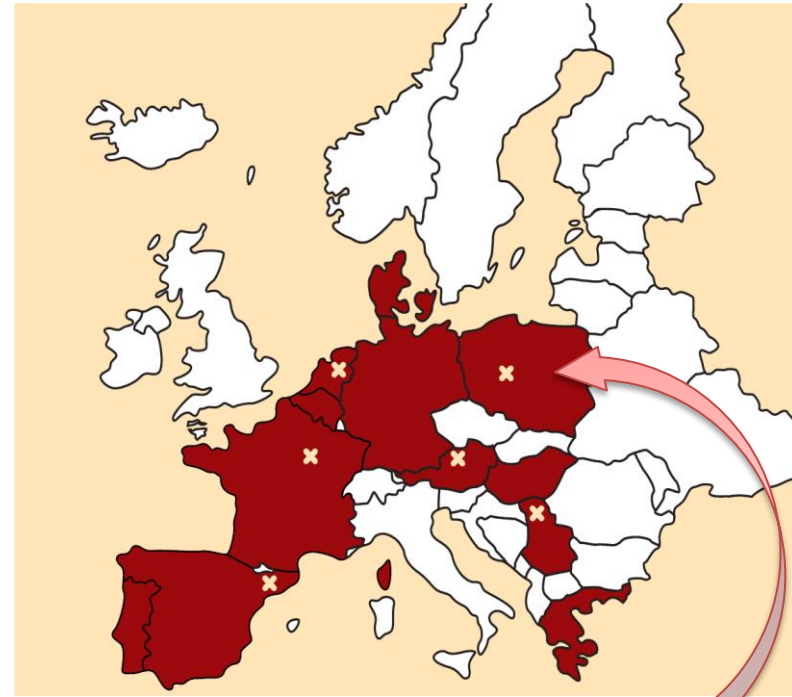
aWISH

Horizon Europe project
Research and Innovation Action

€ 8 000 000 budget

24 partners – 12 countries

01 November 2022 – 31 October 2026



15 sensor & system developments
3 patents
10 follow-up projects
20 AI algorithms/ aggregation methodologies



DATA COLLECTION ON 6 PILOT SITES PER YEAR

 60 000 000 BROILERS

 3 700 000 FATTENING PIGS

www.awish-project.eu
awish@ilvo.vlaanderen.be



Funded by the
European Union

AIM

Develop and offer a **cost-efficient solution to evaluate and improve the welfare of meat-producing animals** at a large scale, across Europe via **automated monitoring of animal-based welfare indicators (AWI) at the slaughterhouse** in order to give feedback and advice on best practices to those responsible for **the various stages of production (farmer, catching team, transporter, slaughterhouse)**.

This approach will be developed and evaluated in close **collaboration with all actors involved, from primary producers up to policy makers and citizens**.

Stay up to date?
Join the expert panel?
www.awish-project.eu



Funded by the
European Union

www.awish-project.eu
awish@ilvo.vlaanderen.be

STAKEHOLDER ENGAGEMENT

5

OVERALL IMPACT ASSESSMENT

