



**Innovations for improving welfare in low-input
outdoor and organic pig and poultry farms**

Anne Collin, INRAE

EU-NZ Animal Welfare Scientific Forum, Online 2024-02-07



Why is it important to consider welfare in low-input outdoor and organic farming systems?

- High quality of the rearing practices and of the products
- Diversity of practices throughout Europe
- Still a need to improve animal welfare and limit mortality, in relation to the outdoor access challenging the animals, ethical issues, the wish of practitioners and societal expectations

Identify, test and evaluate animal welfare-improving practices by taking into account environmental, economic and social impacts including human well-being
One Welfare concept (Garcia Pinillos et al., 2016)

H2020 PPILOW partners and collaborators



PPILOW

Poultry and Pig Low-input and Organic production systems' Welfare

2019-2024



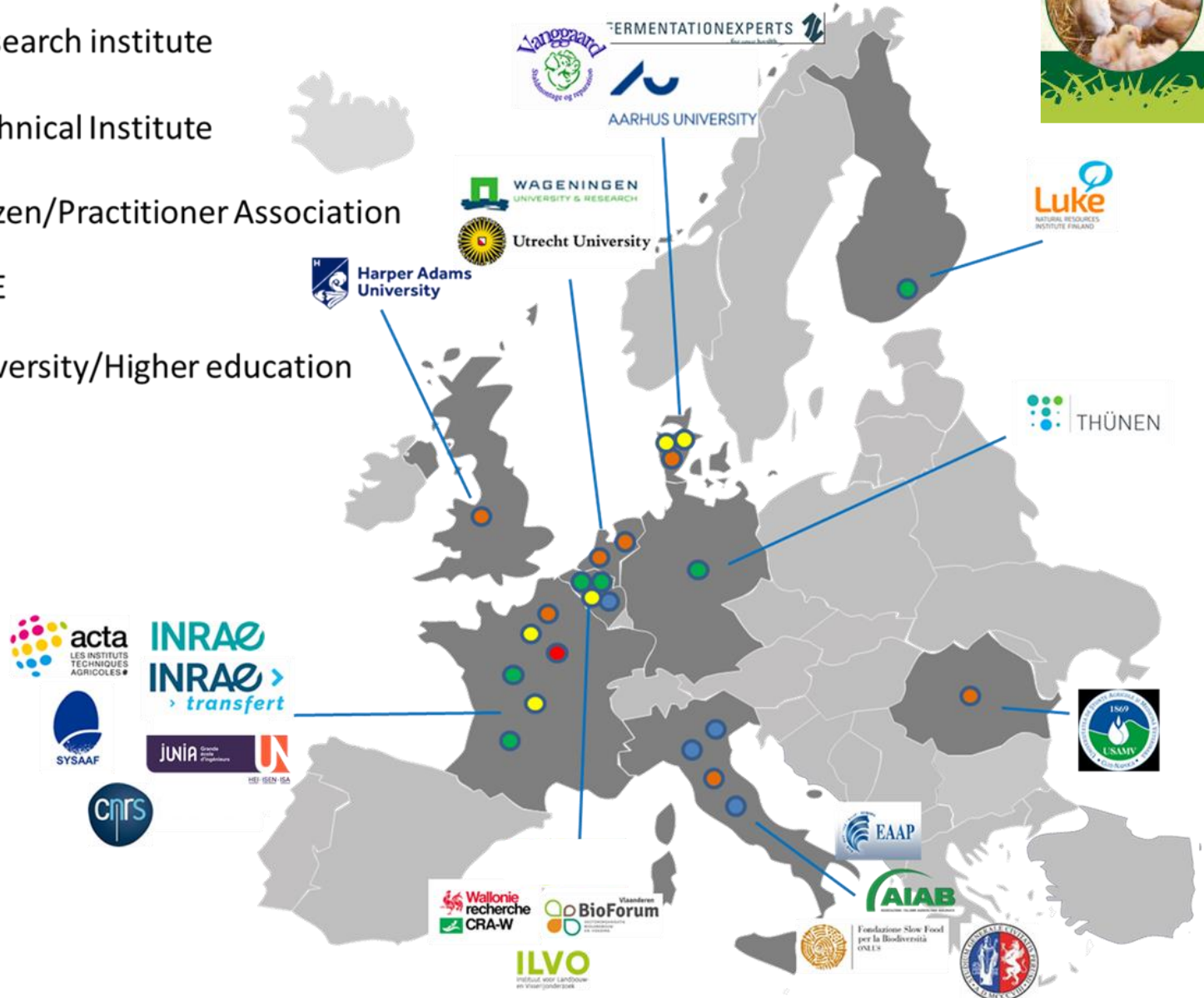
Coordination: **INRAE**

22 PPILOW Partners in 9 countries

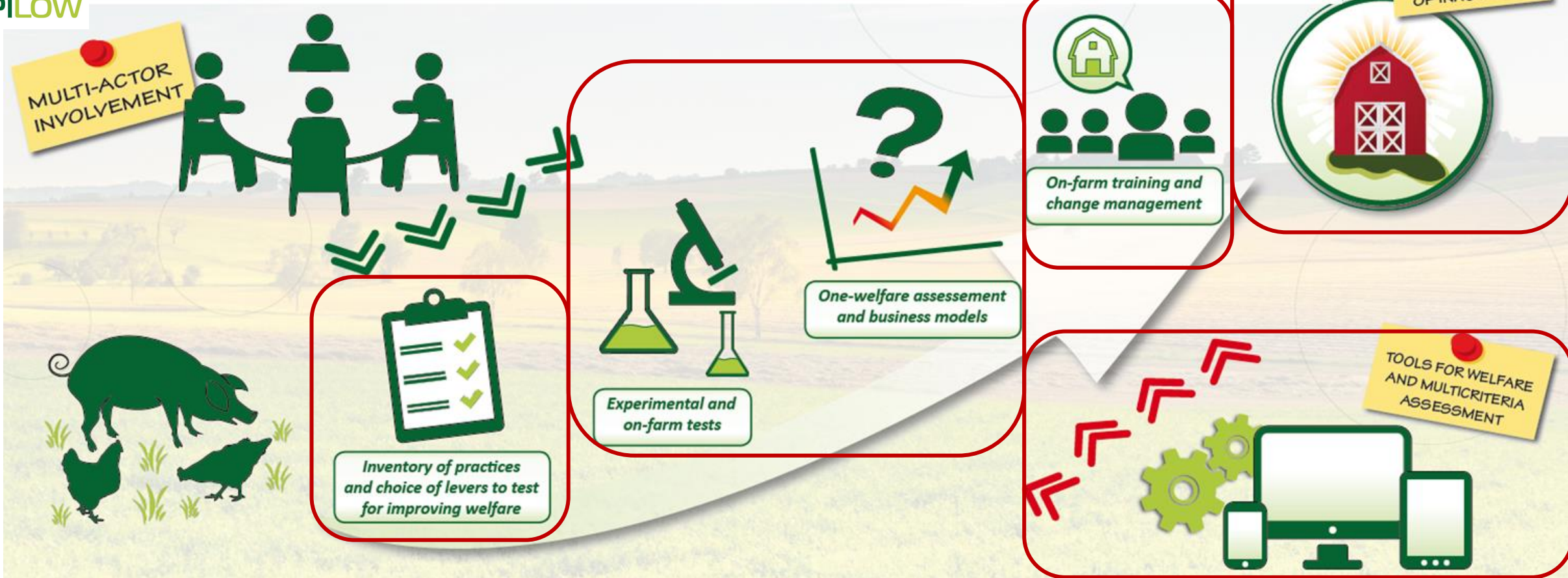
9 National Practitioner Groups (NPG): 4 dedicated to pigs and 5 to poultry

www.ppilow.eu

- Research institute
- Technical Institute
- Citizen/Practitioner Association
- SME
- University/Higher education



Innovative breeding and rearing strategies



Favouring positive behaviours, improving health and robustness

Avoiding piglet castration, beak trimming, the elimination of layer male chicks

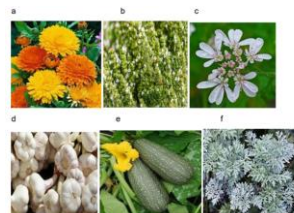




Use of the
PIGLOW and
EBENE welfare
self-assessment
applications



Fig. 1 and 2 – Farrowing huts from the Danish PPILOW partner firm Vanggård Staldmontage (© Vanggård)



Country	NPG	Overview of the innovations implemented on-farm
NL	Poultry	Working on feather pecking and dual-purpose genotypes with a group of farmers and a coop with a focus on layers
DE		Broilers from dual-purpose genotype started from December 2021 to March 2022 and on-farm trial are still on-going
FR		Broilers from dual-purpose genotype were reared in France (December 2021 – March 2022). Laying hens of one PPILOW dual-purpose genotype have been reared on the same farm since April 2022.
DK		Pullets from two dual-purpose genotypes reared in France were then tested on-farm in Denmark. One farmer expressed interest in the dual-purpose genotypes during NPG-meetings and received young hens from two genotypes for the trial
FR		On-farm hatching of slow-growing chicks tested
DE		The testing of on-farm hatching is in the planning phase
DK		On-farm study with laying hens to test the most promising plant or plant extracts on intestinal infections with especially <i>Ascaridia galli</i> .
DE		The testing of a product from Fermentation Experts company is in the planning phase
NL_BE		Alternatives to anthelmintics (planning phase)
FR		PIGLOW app training and test in pig farms
BE	Pigs	PIGLOW app training and test in pig farms
RO		Implementing the experiment on medicinal plants for improving the immune system and limiting parasitism and pathologies on farm
FR		Sow huts designed by Vanggaard and AU and tested in DK were installed in 2 farms
BE		Sow huts designed by Vanggaard and AU and tested in DK implemented in one farm
IT		Sow huts designed by Vanggaard and AU and tested in DK were installed in 2 farms

PPILOW PARTNERS



Fondazione Slow Food
per la Biodiversità
ONLUS



Harper Adams
University



ILVO
Instituut voor Landbouw-
en Visserijonderzoek



LUKE
NATURAL RESOURCES
INSTITUTE FINLAND



SYSAAF



Utrecht University



Thanks for your attention!

www.ppilow.eu