

*Meeting of PPILOW partners with the Eurogroup for animals – 2024-02-22*



**Innovations for improving welfare in low-input  
outdoor and organic pig and poultry farms**

*Meeting of PPILOW partners with the Eurogroup for animals – 2024-02-22*



General presentation of the PPILOW project



Anne Collin  
INRAE, France  
[Anne.Collin@inrae.fr](mailto:Anne.Collin@inrae.fr)



## Why is it important to consider welfare in low-input outdoor and organic farming systems?

- High quality of the rearing practices and of the products
- Diversity of practices throughout Europe
- Still a need to improve animal welfare and limit mortality, in relation to the outdoor access challenging the animals, ethical issues, the wish of practitioners and societal expectations

Identify, test and evaluate animal welfare-improving practices by taking into account environmental, economic and social impacts including human well-being

# PPILOW partners and collaborators



**PPILOW**

Poultry and Pig Low-input and Organic production systems' Welfare

2019-2024



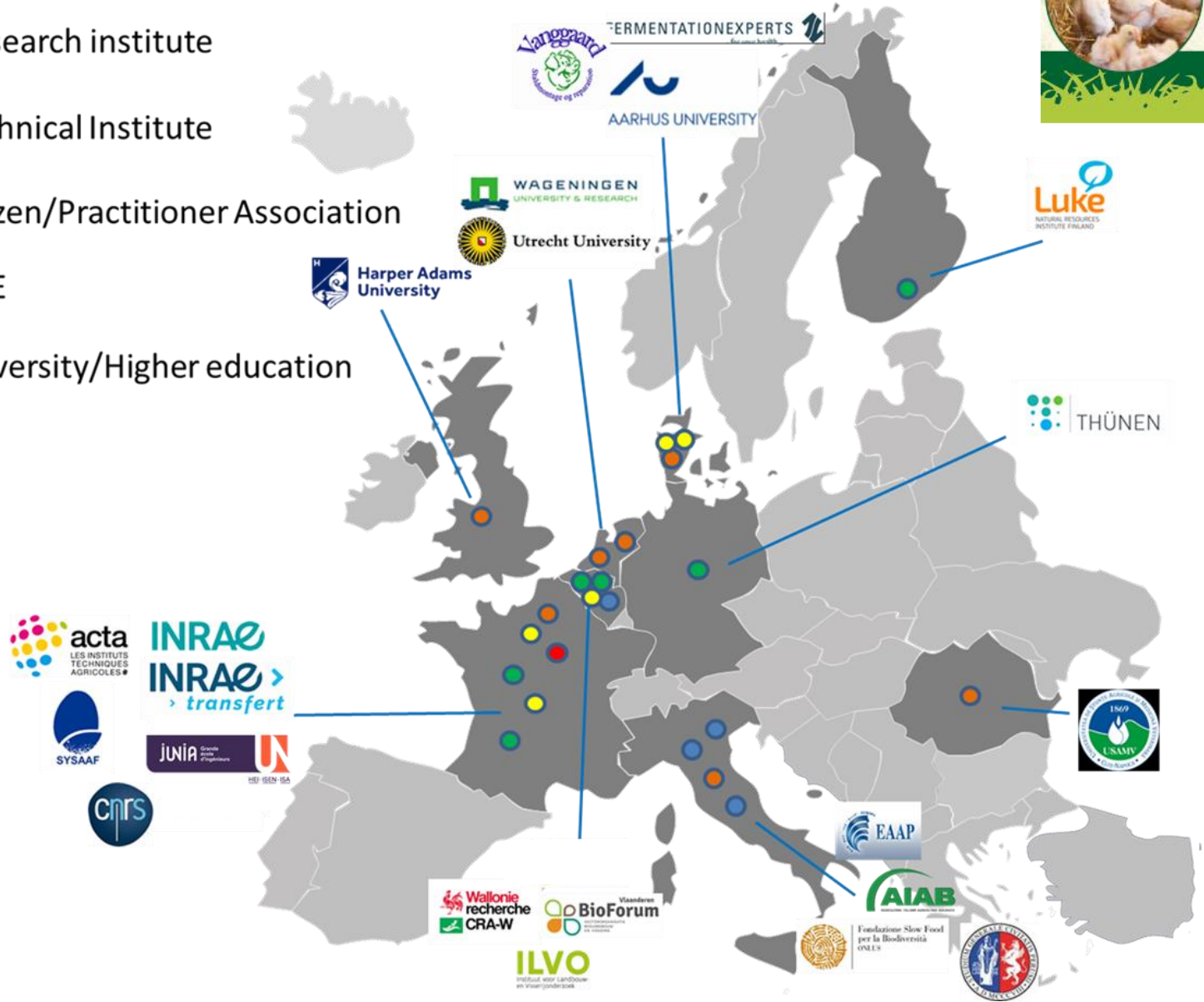
Coordination: **INRAE**

22 PPILOW Partners in 9 countries

9 National Practitioner Groups (NPG)

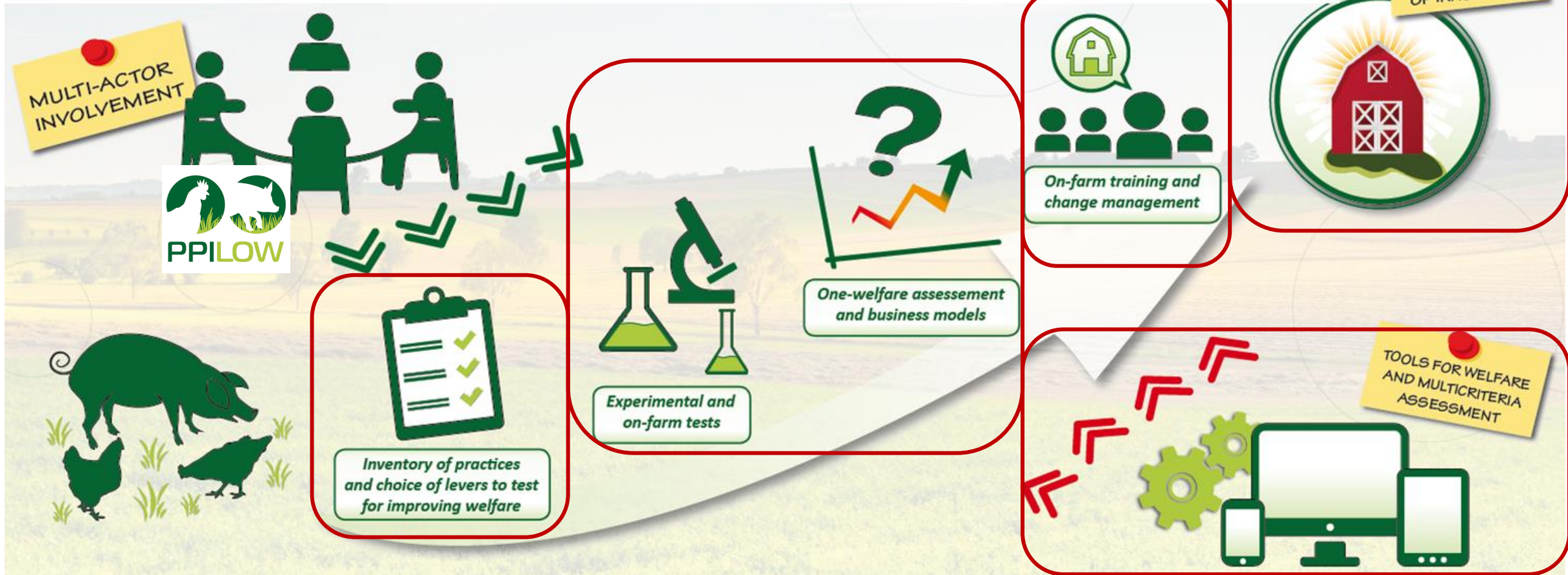
[www.ppilow.eu](http://www.ppilow.eu)

- Research institute
- Technical Institute
- Citizen/Practitioner Association
- SME
- University/Higher education





## Innovative breeding and rearing strategies

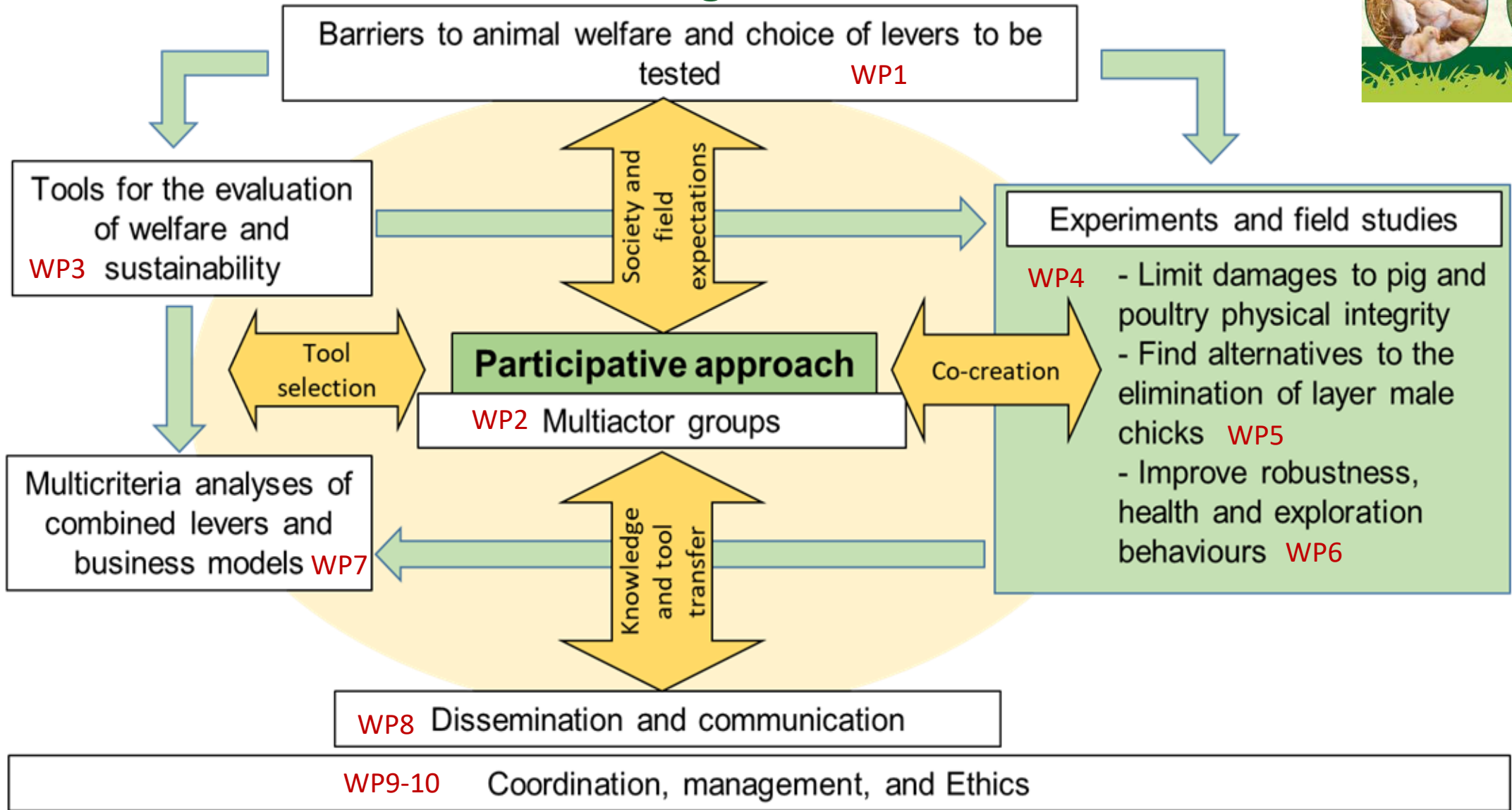


*Favouring positive behaviours, improving health and robustness*

*Avoiding piglet castration, beak trimming, the elimination of layer male chicks*



## PPILOW Organisation



# PPILOW PARTNERS



*Thanks for your attention!*

[www.ppilow.eu](http://www.ppilow.eu)