



## Innovations for improving welfare in low-input outdoor and organic pig and poultry farms

Anne Collin 

*Organic ambassadors 19.03.2024*



## Why is it important to consider welfare in low-input outdoor and organic farming systems?

- High quality of the rearing practices and of the products
- Diversity of practices throughout Europe
- Still a need to improve animal welfare and limit mortality, in relation to the outdoor access challenging the animals, ethical issues, the wish of practitioners and societal expectations

Objective of PPILOW: Identify, test and evaluate animal welfare-improving practices by taking into account environmental, economic and social impacts including human well-being

*One Welfare concept (Garcia Pinillos et al., 2016)*

## H2020 PPILOW partners and collaborators



**PPILOW**

Poultry and Pig Low-input and Organic production systems' Welfare

2019-2024



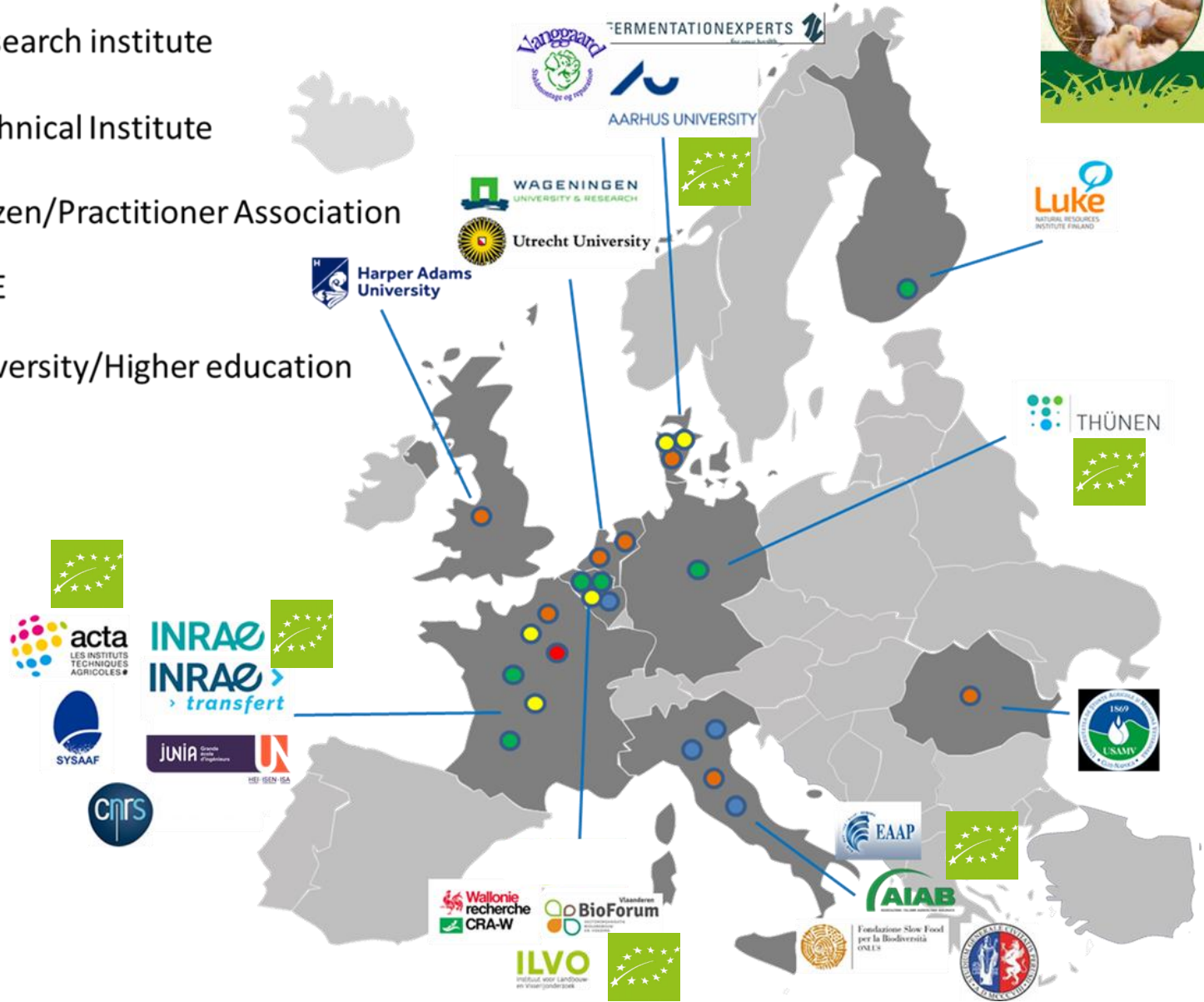
Coordination: **INRAE**

**22 PPILOW Partners in 9 countries**

**9 National Practitioner Groups (NPG): 4 dedicated to pigs and 5 to poultry**

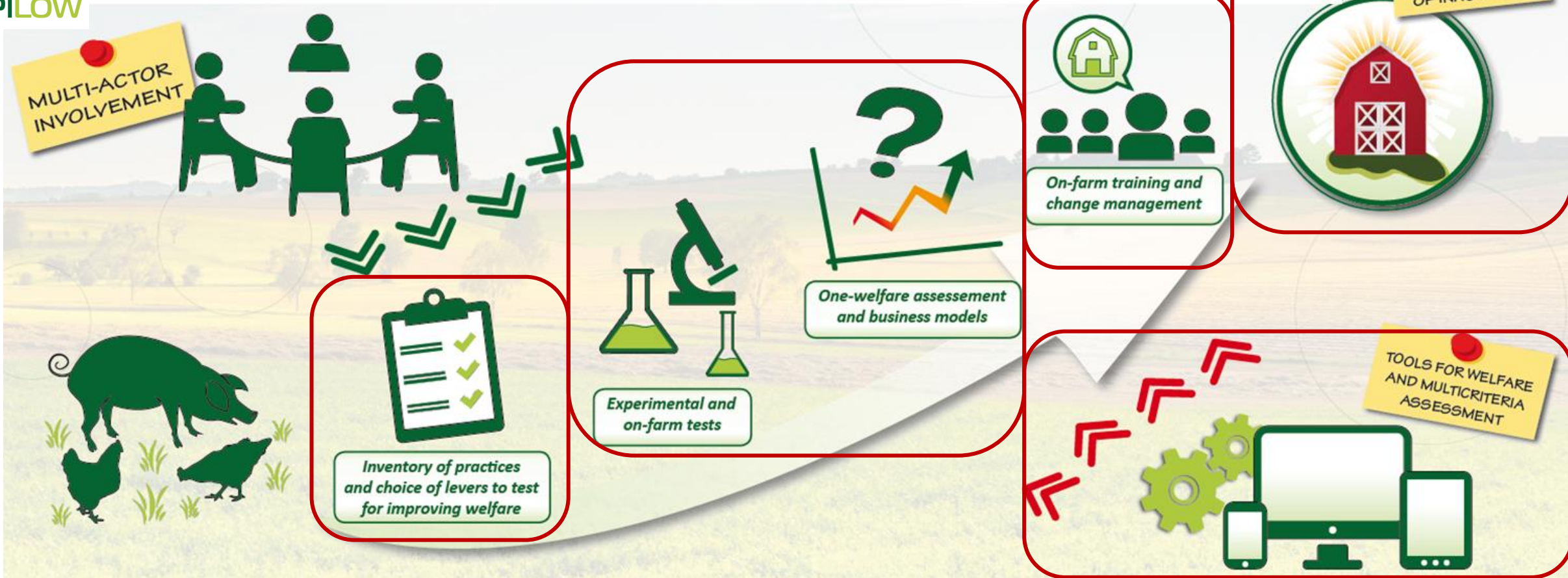
[www.ppilow.eu](http://www.ppilow.eu)

- Research institute
- Technical Institute
- Citizen/Practitioner Association
- SME
- University/Higher education





# Innovative breeding and rearing strategies



*Favouring positive behaviours, improving health and robustness*

*Avoiding piglet castration, beak trimming, the elimination of layer male chicks*







Use of the  
PIGLOW and  
EBENE welfare  
self-assessment  
applications



Fig. 1 and 2 – Farrowing huts from the Danish PPILOW partner firm Vanggård Staldmontage (© Vanggård)



Country	NPG	Overview of the innovations implemented on-farm
NL	Poultry	Working on <b>feather pecking and dual-purpose genotypes</b> with a group of farmers and a coop with a focus on layers
DE		<b>Broilers from dual-purpose genotype started</b> from December 2021 to March 2022 and on-farm trial are still on-going 🇪🇺
FR		<b>Broilers from dual-purpose genotype</b> were reared in France (December 2021 – March 2022). <b>Laying hens of one PPILOW dual-purpose genotype</b> have been reared on the same farm since April 2022. 🇪🇺
DK		Pullets from <b>two dual-purpose genotypes</b> reared in France were then tested on-farm in Denmark. One farmer expressed interest in the dual-purpose genotypes during NPG-meetings and received <b>young hens</b> from two genotypes for the trial 🇪🇺
FR		On-farm <b>hatching of slow-growing chicks tested</b> 🇪🇺
DE		The testing of <b>on-farm hatching</b> is in the planning phase 🇪🇺
DK		On-farm study with <b>laying hens to test the most promising plant or plant extracts</b> on intestinal infections with especially <i>Ascaridia galli</i> .
DE		The testing of a product from <b>Fermentation Experts company</b> is in the planning phase
NL_BE		<b>Alternatives to anthelmintics</b> (planning phase)
FR		<b>PIGLOW app training and test in pig farms</b> 🇪🇺
BE	Pigs	<b>PIGLOW app training and test in pig farms</b>
RO		<b>Implementing the experiment on medicinal plants</b> for improving the immune system and limiting parasitism and pathologies on farm
FR		<b>Sow huts designed by Vanggaard and AU and tested in DK were installed in 2 farms</b> 🇪🇺
BE		<b>Sow huts designed by Vanggaard and AU and tested in DK implemented in one farm</b> 🇪🇺
IT	<b>Sow huts designed by Vanggaard and AU and tested in DK were installed in 2 farms</b> 🇪🇺	



## Involvement of organic stakeholders in the final phase of the PPILOW project

- Reflection on business models (ex: organic non-castrated pigs, dual-purpose breeds, on-farm hatching...) and labelling initiatives
- Exchange of knowledge and on-farm implementation of innovations with members of the PPILOW National Practitioner Groups (ex: Welfare and Biosecurity)
- Multiactor dissemination network for impact: PPILOW European Multiactor Board, EU CAP Network, Organic Farm knowledge platform...

# PPILOW PARTNERS



Fondazione Slow Food  
per la Biodiversità  
ONLUS



Harper Adams  
University



Utrecht University



*Thanks for your attention!*

[www.ppilow.eu](http://www.ppilow.eu)